

Frame Storage

Protecting Your Hive's Most Valuable Resource



Matt Thomas
First Vice President
– October 2020 –



Value of Drawn Comb? -Resources

- 8 pounds of honey must be consumed by a honeybee to produce 1 pound of wax.
- *To produce 1 frame of drawn comb it takes 1.6 pounds of honey.*





Value of Drawn Comb? -Time

- A colony takes ~2 days to draw each deep frame during a nectar flow.
- Time to draw comb will depend on flow (or syrup), # of bees, age of bees, temperature.





Why do we need to protect drawn comb?



Wax Moths





Typical Storage Methods

- Open air storage
- Sealed using Para Moth
- Freezer/Refrigerator
- Inside hive



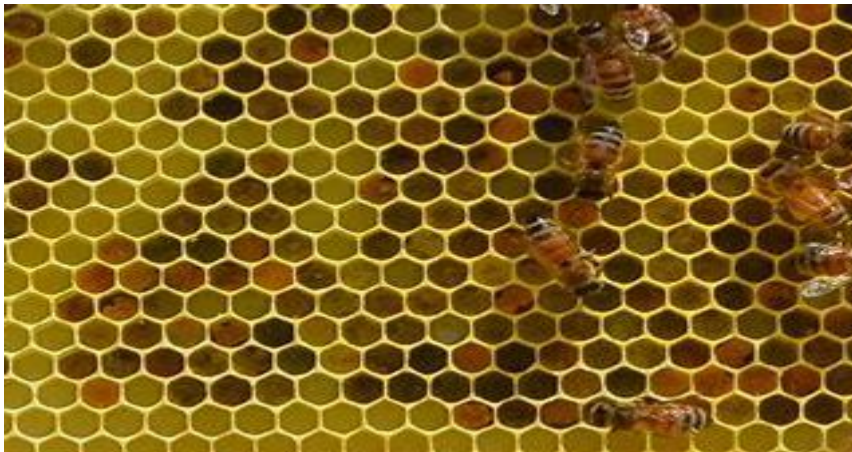
Regardless of the method you choose

- Prior to Storage, let the bees clean out the remaining honey/nectar after extraction so that the frames are DRY and will not mold or attract Hive Beetles.
- Freeze the frame to kill any SHB and Wax Moth eggs/larvae.



Caution

- If you have lots of pollen in your stored comb it will attract Hive Beetles.
- Brood frames attract Wax Moths more than honey frames.





Open Air Storage



- Hanging from rafters in a barn or build a freestanding stand need to be cautious in humid, dark environments.
- Light (sun or artificial) and ventilation are crucial for open air storage.
- Screen a bottom base/board with window screen wire. Stack boxes 4-5 high - top with a screened top. The light and cross ventilation is the formula here.





“Para-Moth” crystals

(paradichlorobenzene) or
(P-dichlorobenzene)

ONLY



Moth Balls
containing
“Naphthalene”
is harmful to
bees.



Para-Moth

1. Place Telescopic lid upside down
2. Stack 2 boxes w/frames in it
3. Lay a piece of paper (8x11) in the center of the second box
4. Pour 2-3 Teaspoons Para-Moth on it
5. Add 2 more boxes
6. Repeat steps 3 & 4
7. Continue until you reach 6 boxes
8. Adding your final paper/Para-Moth
9. Top with a piece of cardboard cut to the size of the box
10. Tape each joint very well (except the bottom where the box and lid join)
11. Re-apply Para-Moth as needed





Para-Moth in bags



1. Place Para-Moth on paper “on top” of 2 boxes with frames
2. Wrap in “clear” plastic bags.
3. Tape securely



Prior to Usage: Para- Moth

- Before using frames stored with Para-Moth you need to “**air out**” the boxes and frames for 1-2 weeks prior to installing in your hives.





Easiest Method?

- Storing your drawn comb frames in a freezer when not in use.
- Take them out 24 hours prior to reinstalling in beehive.





Regardless of the method you choose...

**You will set yourself
up for a great
Spring Flow!**



Questions?

